

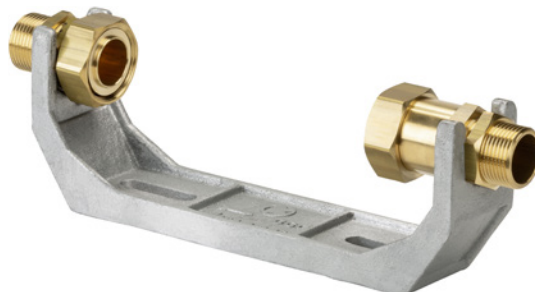
Water meter installation brackets

Installation bracket for cold water meter

Construction characteristics

- Optionally closed or open bracket with connection threads and single-sided piece for easy installation of the water meter (water meter is not supplied)
- G 1" connection thread according to ÖNORM EN ISO 228
- No ring or counter nut required for sealing the valve compensation piece
- Safe electrical bridging
- The pipe external thread is located outside the bracket
- Union nut is provided for infeed side plumbing

No. KR331



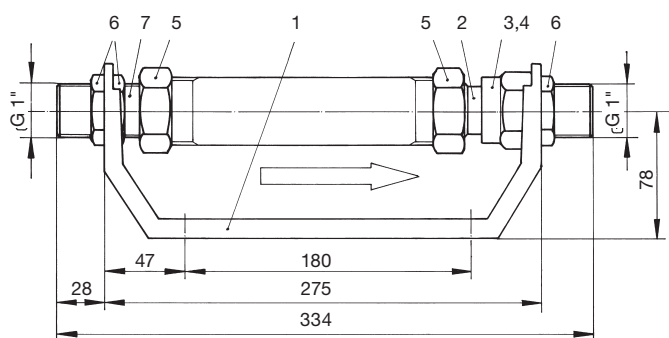
Material | Technical features

- 1 **Installation bracket** made of ductile iron, hot-dip galvanised
- 2 **Compensation piece** made of brass
- 3 **Connecting threads** made of brass
- 4 **O-ring** made of elastomer
- 5 **Union nut** made of brass
- 6 **Nut** made of brass
- 7 **Fixed screw connection** made of brass



Suitable accessories

Back flow preventer stainless steel:	No. KR368
Back flow preventer POM:	No. KR369
Pre-meter valve:	No. KR352
Post-meter valve:	No. KR353
Base plate:	No. KR341



Order no.	MOP (PN)	DN	Valve connector	for cold water meter acc. to ÖNORM B 2535
KR331	16	1"	2 external threads G 1" acc. to ÖNORM EN ISO 228	3 (5) m³/h - / 7 (10) m³/h