

# Flange connections

## For PVC pipes, PN 16

### Design features

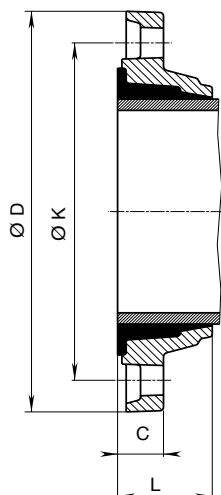
- For PVC pipes according to EN ISO 1452-2
- Flange sized according to EN 1092-2 and drilled in accordance with EN 1092-2 PN 10 standard; PN 16 for DN 200 to DN 400 please specify on order - other standards on request
- The resilience of the connection prevents tension in the pipe and minimises the danger of breakage

### Assembly instructions

- Cut the pipe end straight, do not chamfer or moisten - push the flange onto the pipe and then push the gasket on

### Material | Technical features

- **Flange** made of ductile iron, epoxy powder coated
- **Sleeve gasket** made of elastomer



## Double chamber flange adapter No. 5600



Order No.	MOP (PN)	Flange DN / Ø Pipe									
		50	60	65	80	100	125	125	150	200	300
		63	63	75	90	110	125	140	160	225	315
5600	16									*1	*

#### Explanation:

\* also available in PN 16

<sup>1</sup> Flanges with an extended hole circle are not suitable for use with fixed studs!

Flange DN	Ø Pipe	Ø D	Ø K	C	L	Bolts		Weight
						Qty.	Thread	
50	63	165	125	24	54	4	M 16	2,0
60	63	175	135	24	54	4	M 16	2,6
65	75	185	145	24	54	4	M 16	2,7
80	90	200	160	25	60	8	M 16	3,2
100	110	220	180	26	62	8	M 16	4,1
125	125	250	210	28	66	8	M 16	5,8
125	140	250	210	28	66	8	M 16	5,0
150	160	285	240	29	66	8	M 20	5,6
200	225	345	300	29	93	8	M20	7,9
300	315	445	400	33	117	12	M 20	15,8