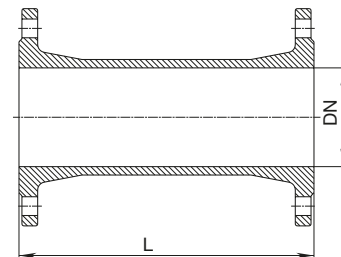


## Design features

- According to EN 545
- Working pressure MOP (PN) 16
- Made of ductile iron, epoxy powder coated
- Flange size according to EN 1092-2 | PN 16
- Standard drilling to EN 1092-2 | PN 10

## Double flanged pipe

FF-piece  
No. 8500



DN	L	Weight	
50	200	6,5	
	400	10,0	
65	200	8,0	
	400	13,0	
80	100	7,6	
	150	8,5	
	200	9,2	
	300	10,8	
	400	12,4	
	500	14,1	
	600	15,7	
	800	19,0	
100	1000	22,0	
	100	8,6	
	150	9,8	
	200	10,7	
	300	12,7	
	400	14,8	
	600	18,8	
	800	23,0	
125	1000	27,0	
	200	13,3	
	600	24,0	
150	1000	34,5	
	150	20,0	
	200	16,5	
	300	19,7	
	400	23,0	
	600	29,5	
200*	800	36,0	
	1000	42,5	
	200	20,0	
	600	41,5	
250	800	50,5	
	1000	60,0	
	200	22,1	
	300	38,0	
	400*	44,0	
	500*	50,5	
	600	56,3	
300	800	68,5	
	1000	81,0	
	300	49,5	
	400*	57,0	
	500	65,0	
	600	73,0	
	800	88,5	
	1000	104,0	

\* Also available drilled to EN 1092-2 | PN 16  
(Please specify on order)