

# Fittings

## Flap valve, PN 10 | PN 16

### Design features

- Flange connection according to EN 1092-2, drilled according to EN 1092-2 | PN 10 standard; EN 1092-2 | PN 16 DN 200 – DN 600 please specify on order
- Double hinged for improved sealing performance
- Gasket on the cover for noise reduction and durability of the coating

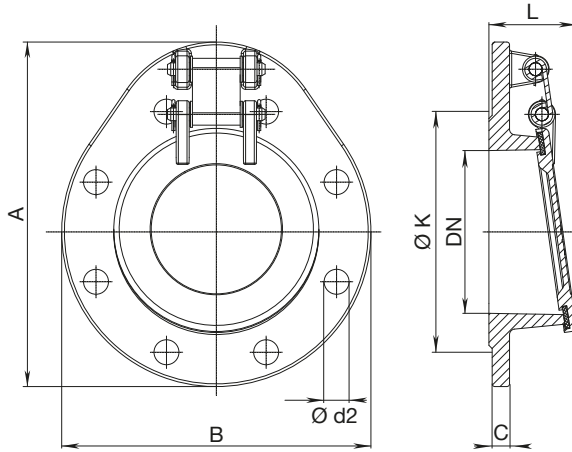
### Material | Technical features

- **Body and cover** made of ductile iron, epoxy powder coated
- **All connections** made of stainless steel
- **Seal** made of elastomer
- **External joint** prevents any obstruction thanks to the free outflow

### No. 9930

DN 50 – 150

DN 200 – 600



Ill.: symbol

DN	MOP (PN)	A	B	L	ØK	C	Bolts		Weight
							Qty	Ød2	
50	10/16	177,5	165	56	125	19	8	19	3,05
65		197,5	185	56	145	19	8	19	3,67
80		245,0	200	68	160	19	8	19	5,17
100		267,5	220	73	180	19	8	19	5,88
125		295,0	250	78	210	19	8	19	7,81
150		317,5	285	80	240	19,0	8	23	9,2
200	10	406	340	130	295	20,0	8	23	23,0
	16				12		23		
250	10	462	405	138	350	22,0	12	23	30,0
	16				12		28		
300	10	518	455	142	400	24,5	12	23	37,0
	16				12		28		
400	10	658	580	177	515	24,5	16	28	68,0
	16				16		31		
500	10	793	715	207	620	26,5	20	28	112,0
	16				20		34		
600	10	918	840	217	725	30,0	20	31	160,0
	16				20		37		

Larger dimensions on request