

Universal-H shut-off saddle

For steel, ductile iron and asbestos cement pipes

Design features

- For under pressure drilling
- Can be pressure tested from both directions
- Solid body
- Flexible padded wrap around strap for easy installation
- Favorable angle of contact
- Optimal force transition via bolt nut and holding piece
- The saddle seal is moulded to fit the pipe diameter
- All internal threads are fitted with a corrosion protection ring to prevent corrosion and incrustations

Material | Technical features

- Saddle body** made of ductile iron, epoxy powder-coated
 - Saddle seal** and **seal** for intermediate shut-off made of elastomer
 - Cover** made of POM, fiber glass reinforced (with rubber seal)
 - O-ring carrier** made of POM
 - Nuts** and **washers** made of stainless steel (Molybdenum-coated)
 - Strap** of passivated stainless steel, strength 1,5 with insulating elastomer **rubber padding**
 - Holding piece** made of glasfibre-reinforced PA
 - Corrosion protection ring** made of elastomer
 - Hexagonal screws** and **washers** made of stainless steel
- Drilling instructions (see page I 3/1)

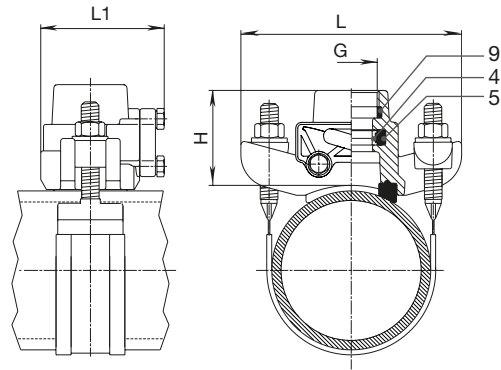
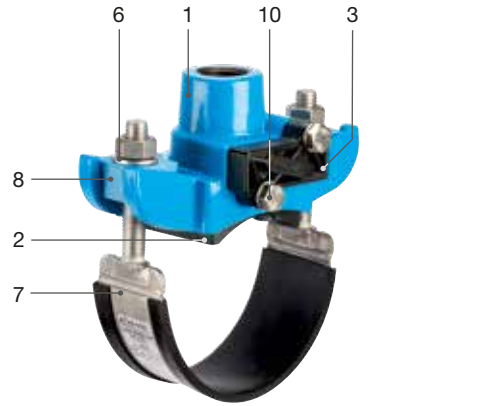
Suitable accessories

- Drilling machine:** No. 5800, No. 5805
Saddle blade No. 8401
Strap: No. 3110 (see page L 4/2)

Universal-H shut-off saddle

No. 3811 Complete

No. 3811G Without strap and saddle seal



Order-No.	MOP (PN)	Internal thread ISO 228 G	Dimension/DN											
			65	80	100	125	150	200	250	300	400	500		
3811	16	1"												
		1½"												
3811G		1"	DN 65 – DN 500											
		1½"	DN 65 – DN 500											

DN	ISO 228	H	L	L1	Weight
65 – 500	1"	84	200	112	2,60
	1½"				2,80

When ordering, please state DN, pipe Ø and pipe type; weight without strap | strap see page I 3/5