

# HAKU saddle

## For PE and PVC pipes



### Design features

- For **PE pipes** according to EN 12201 and DIN 8074 and **PVC pipes** according to EN ISO 1452-2
- The HAKU seal is in full contact with the entire diameter of the PE or PVC pipe and is glued onto the saddle for ease of assembly
- Several concentric seals with increasing diameter surround the outlet, relieving pressure exerted upon the drill hole and protects it from deformation
- The protective layer on PE pipes should be removed prior to mounting the saddle
- No. 5250 for drilling without pressure

### No. 5250



### Material | Technical features

- 1 **Saddle body** made of ductile iron, epoxy powder coated
- 2 **Seals** made of elastomer
- 3 **Bolts** (Molybdenum-coated) and **washers** made of stainless steel
- 4 **Corrosion protection ring** made of elastomer

### Suitable accessories

**Drilling machine:** No. 5800, No. 5805

Order No.	Pipe Ø	MOP (PN)	Internal thread outlet ISO 228			
			1"	1¼"	1½"	2"
5250	40	16				
	50					
	63					
	75					
	90					
	110					
	125					
	140					
	160					
	180					
	200					
	225					
	250					
	250*					
	280					
	280*					
	315					
	315*					
	355*					
	400*					
450*						
500*						
630*						

\* Supplied as saddle piece with strap

### Application examples



# HAKU saddle

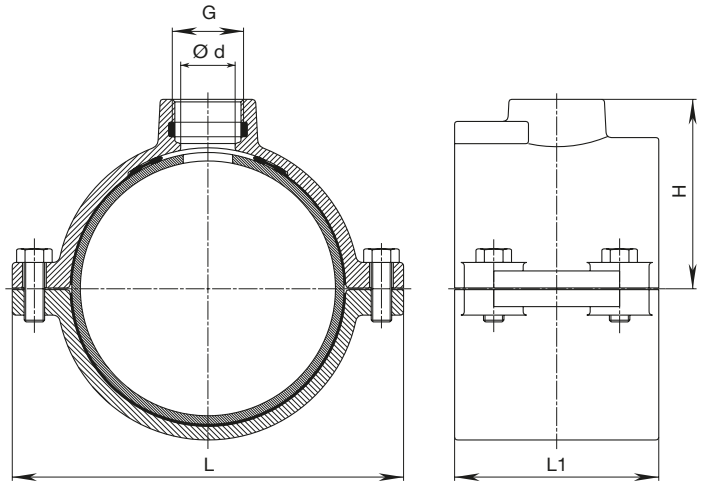
## For PE and PVC pipes

Ø Pipe	G ISO 228	Ø d	H	L	L 1	Weight
40	1"	27	42	98	70	0,95
50	1"	27	56	110	80	1,20
63	1"	27	57	124	100	1,80
	1¼"	33	62			2,00
	1½"	40+	62			1,90
75	2"	40+	68	135	110	2,10
	1"	27	63			2,15
	1¼"	33	68			2,25
	1½"	40	68			2,20
90	2"	50	73	150	110	2,30
	1"	27	71			2,60
	1¼"	33	75			2,70
	1½"	40	75			2,60
110	2"	50	80	170	120	2,70
	1"	27	81			3,60
	1¼"	33	85			3,60
	1½"	40	85			3,80
125	2"	50	90	192	120	3,60
	1"	27	87			3,70
	1¼"	33	93			3,70
	1½"	40	93			4,15
140	2"	50	98	208	120	4,10
	1"	27	96			4,40
	1¼"	33	100			4,30
	1½"	40	100			4,60
160	2"	50	106	230	120	4,50
	1"	27	106			5,90
	1¼"	33	111			6,10
	1½"	40	111			6,30
180	2"	50	116	262	120	6,20
	1"	27	125			8,00
	1¼"	33	125			8,00
	1½"	40	127			8,10
200	2"	50	127	282	120	8,10
	1"	27	132			8,10
	1¼"	33	132			7,80
	1½"	40	137			8,30
225	2"	50	137	310	120	8,10
	1"	27	143			9,10
	1¼"	33	145			9,40
	1½"	40	145			9,70
250	2"	50	150	347	180	9,60
	1**	27	156			11,00
	1¼**	33	156			11,30
	1½**	40	163			11,50
280	2**	50	163	377	180	12,00
	1**	27	176			3,80
	1¼**	33	176			3,60
	1½**	40	176			3,60
315	2**	50	176	408	180	3,30
	1**	27	178			14,20
	1¼**	33	194			3,58
	1½**	40	194			3,80
355	2**	50	196	270	120	3,75
	2"	50	196			3,55
	1½**	40	243			16,70
	2**	50	220			3,50
400	1½**	40	243	270	120	4,90
	2**	50	243			4,90
450	1½**	40	268	235	120	4,60
	2**	50	268			4,60
500	1½**	40	292	255	120	4,90
	2**	50	292			4,90
630	2**	50	342	255	120	9,50

### No. 5250

#### Pipe Ø40 – 315

With internal threaded outlet ISO 228, in conjunction with shut-off adapter No. 3720 for under pressure drilling



+ Drilling max. 35

#### \*Pipe Ø250 – 630 (supplied as saddle piece with strap)

Suitable only for SDR 11 PE pipes or stronger SDR class

With internal threaded outlet ISO 228, in conjunction with shut-off adapter No. 3720 for under pressure drilling

