

# Pipe repair clamp

## For ductile iron pipes

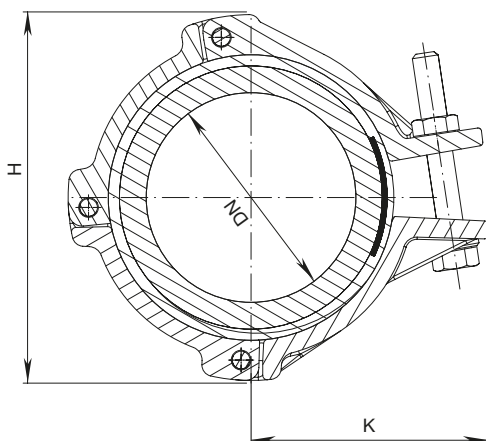
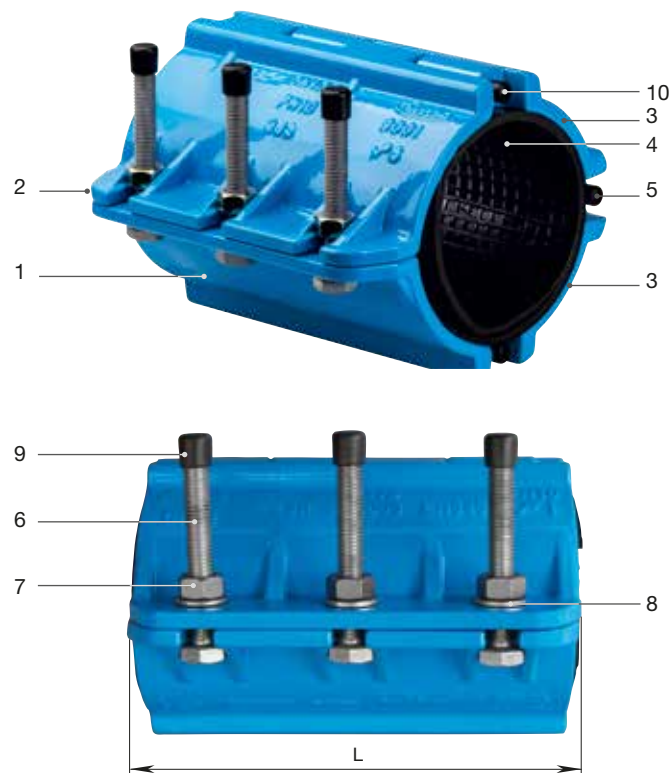
### Design features

- For a permanent repair of a cast line, not thrust-proof
- Fully encompassing elastomer gasket seals transverse cracks and other damage to cast iron pipes
- Epoxy powder coated inside and outside

### Material | Technical features

- 1-3 **Segments TOL** made of ductile iron, epoxy powder coated
- 4 **Sleeve gasket** made of elastomer
- 5 **Hinge rods** made of stainless steel
- 6 **Bolts** made of stainless steel with teflon coating
- 7 **Nuts** made of stainless steel
- 8 **Washers** made of stainless steel
- 9 **End cap** made of plastic - for thread M12
- 10 **End cap** made of plastic - for stud end Ø8

### No. 0760 "TOL"



Order No.	MOP (PN)	Face to-face length L	Version	DN		
				80	100	150
0760	10	200	single lug			
0761			double lug			

DN	L	H	K	Tolerance range	Max. tightening torque / Nm	Max. tightening torque for transverse crack / Nm	Weight
80	200	144	97	95 — 102	40	70	6,2
100		164	107	115 — 122	40	70	6,7
150		242	145	167 — 175	60	95	14,1

# Pipe repair clamp

## For ductile iron pipes

### Assembly

- The segment design permits an easy and quick installation
- The pipe must be cleaned in advance and any insulating layers have to be removed
- Distance from the defective point to saddle edge min. 60 mm gap width of the pipe to be joined - max. 5 mm
- In case of completely broken pipe ensure that the pipe is not subjected to tensile stress before connecting
- Before assembly, loosen the screws to the maximum, whereby the nut is not removed from the screw
- When installing the clamp, care shall be taken that the end of the gasket (1) that is closer to the pressure sheet (3) is located between the pipe (4) and the other end of the gasket (2). The rubber ends shall sufficiently overlap to ensure the sealing effect
- We recommend positioning the clamp in such a way that the bolt heads are well accessible so they can be tightened properly. The nuts are fixed in the locating slots of the opposite segment
- The bolts shall be tightened evenly (in alternating order)
- Max. tightening torque - see table page I 6/3
- The clamp can be used for one installation process. It's not intended for reuse
- After installation, please perform a leakage test while the trench is still open. The maximum operating pressure has to be complied with as a function of the medium and pipe outside diameter (see "Intended use")

### No. 0760 "TOL"

