

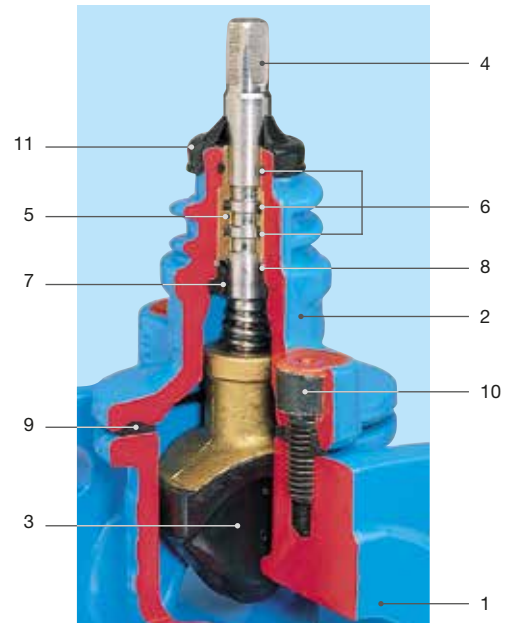
# Service valve

## Overview

### Design features

#### Ductile iron valve

- **Resilient seated gate valve** with smooth and straight-through bore
- Flange valve
- Valve with ISO-fitting
- Valve with thread
- Service valve for PE fusion
- Service valve
- Service valve with drainage
- 2 O-rings mounted on all sides in rust-proof material
- Spindle bearing made of brass
- Threaded connection for extension spindle
- Suitable for all underground installations
- For service connection fittings made of ductile iron with external thread, the free lying threads must be protected against corrosion according to trade regulations after assembly



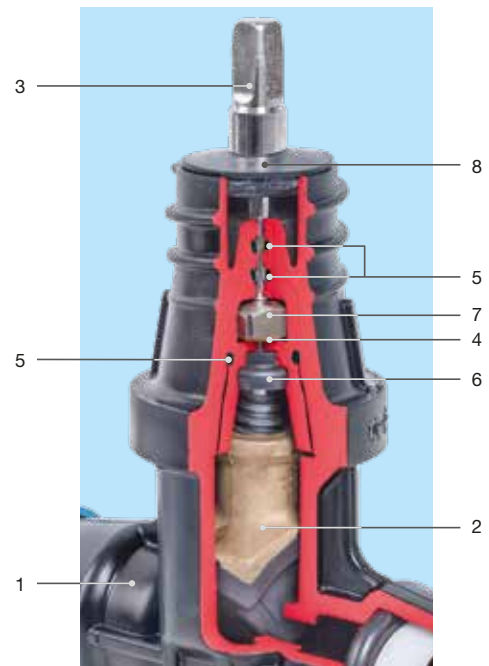
### Material | Technical features

- 12 **Body (1), bonnet (2)** made of ductile iron, epoxy powder coated inside and out (see page 4)
- 3 **Wedge** made of brass, with vulcanised elastomer
- 4 **Duplex stainless steel spindle** with rolled thread and flat-rolled sealed sliding surface
- 5 **Spindle bearing** (O-ring carrier) made of brass
- 6 **O-rings** made of elastomer
- 7 **Back seat** made of elastomer
- 8 **Retaining ring** made of stainless steel
- 9 **Bonnet gasket** made of elastomer
- 10 **Internal hexagonal screws** recessed and absolutely corrosion protected through casting compound
- 11 **Wiper ring** made of elastomer

### Design features

#### Valve made of POM

- **Resilient seated gate valve** with smooth and straight-through bore
- Valve with ISO-fitting
- Valve with Hawle-Fit socket
- Valve with thread
- Service valve for PE fusion
- Service valve
- Bonnet with body homogeneously connected through rotational welding
- 2 O-rings for spindle sealing
- Spindle bearing made of brass
- Overload protection
- Threaded connection for extension spindle
- Suitable for all underground installations



### Material | Technical features

- 1 **Body** made of POM
- 2 **Wedge** made of brass, with vulcanised elastomer
- 3 **Duplex stainless steel spindle** with rolled thread and flat-rolled sealed sliding surface
- 4 **Spindle bearing** made of brass
- 5 **O-rings** made of elastomer
- 6 **Back seat** made of elastomer
- 7 **Overload protection** made of stainless steel
- 8 **Wiper ring** made of elastomer

# ISO combination tapping valve

## Made of POM

### Design features

- Resilient seated gate valve with smooth straight-through bore
- With conical 2" external thread according to EN 10226 for the clamp attachment and with cylindrical connection thread 1½" according to ISO 228 for connection fitting No. 6221F
- For PE pipes according to EN 12201 and DIN 8074
- One valve with 5 ISO push-fit fittings for PE pipes (pipe Ø 25/32/40/50/63 mm) - reduces stockkeeping!
- A robust valve made of POM
- All parts made of corrosion free materials
- For the easiest under pressure tapping and the quickest installation of ISO push-fit fittings
- Sealing system: the contact between wedge and body is friction free. Therefore no scuffing or abrasion of the wedge

**Standard version:** without handwheel and extension spindle

**Special versions:** on request

**No. 2681**  
**No. 2680**  
**No. 6221F**  
**No. 5940**



Max. drill tip  
 Ø 24 mm

### Suitable accessories

**Suitable accessories:** see page J 1/2

Handwheel: No. 7800  
 Extension spindle: rigid No. 9101  
                           telescopic No. 9601  
 Surface box: rigid No. 1550, No. 1650  
                   telescopic: No. 1850, No. 1851K  
 Extension spindle: No. 7820  
 Sealing cap: No. 2156, No. 2157  
 Chamfering tool: No. 6000  
 Saddle blades: No. 6010  
 Pipe cutter: No. 6050  
 Mounting spray: No. 3443  
 Drilling machine: No. 5800, No. 5805

Order No.	Version	MOP (PN)	DN	Thread	Ø PE-pipe	Weight
2681	ISO Combination tapping valve without fitting	16	1"	2" – 1½"		0,81
2680	ISO Combination tapping valve with choice of ISO push-fit fitting				25	0,90
			32	0,94		
			40	1,02		
			50	1,10		
6221F	ISO push-fit fitting with backing washer		63	1,23		
			25	0,10		
			32	0,13		
			40	0,22		
5940	Adapter for Hawle drilling machine 2"		50	0,29		
			63	0,41		
			1½" – 2"		1,30	

# ISO combination tapping valve

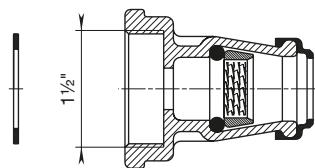
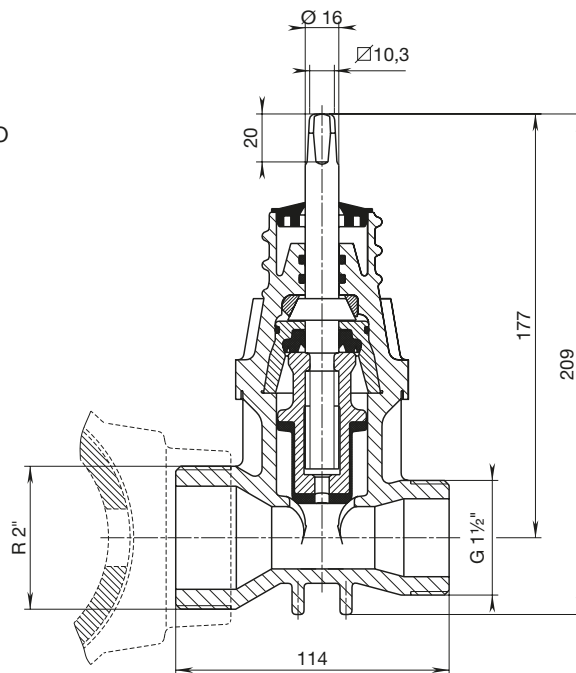
Made of POM

## Tapping valve DN 1"

With 2" external thread EN 10226-1 for mounting onto saddle and

1½" external thread ISO 228 only for ISO push-fit fitting No. 6221F

No. 2681



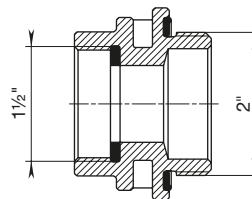
### ISO push-fit fitting No. 6221F

Made of POM

Internal thread 1½" ISO 228

Push-fit socket for PE pipes up to PN 16, pipe Ø 25/32/40/50/63 mm

The flat gasket saves the need for seal



### Adapter No. 5940

Made of bronze

Internal thread 1½" ISO 228

External thread 2" ISO 228

For Hawle drilling machine

No. 5800 or No. 5805

## Drilling and assembly instructions

### 1. Mounting onto the saddle:

Screws the 2" external thread into the internal thread of the saddle

### 2. Drilling:

Open the valve completely; if necessary use adapter (see above)

### 3. Shut-off:

After drilling, retract the drill and close the valve

### 4. Pipe assembly:

Screw on one of the five ISO push-fit fittings - push the pipe in - finished

