

ISO pipe fitting

Hawle wall inlet fitting



Design features

- This wall inlet fitting enables the plastic pipe connection to end on the outside of the wall
- The outside central portion of the wall inlet body is ribbed and uncoated to ensure good adhesion to concrete
- The ISO socket on the outside of the wall is cylindrical to enable pushing on an additional PE protective sleeve
- There are two connection possibilities on the inside wall. The standard version with internal thread connection or an additional external thread to the internal thread for connection of a protective sleeve

Material | Technical features

- **Body** made of ductile iron, epoxy powder coated
- **Seals** made of elastomer

Hawle wall inlet fitting

No. 6990 Made of ductile iron



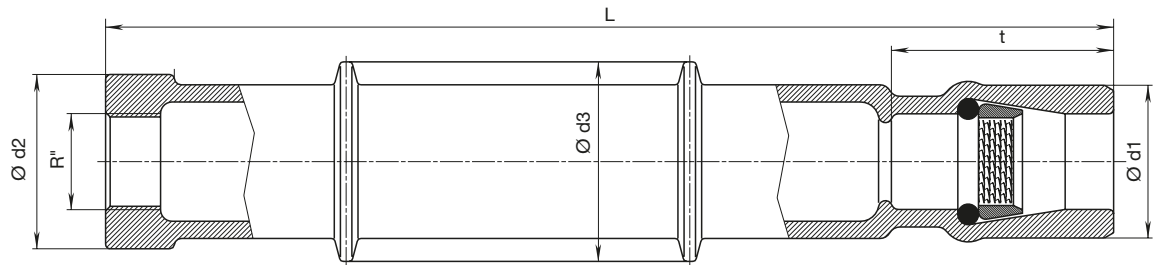
Ø Pipe	Ø d1*	R" ISO 228	Ø d2** ISO 228	t	L	Ø d3	Weight
32	56	1"	R 2"	75	440	80	4,65
40	66,5	1¼"	R 2½"	90	440	87	5,40
50	80	1½"	R 2½"	105	440	87	5,70
63	97	2"	R 3"	510	470	95	8,40

* A protective sleeve can be pushed on

** Can be supplied with external thread (for tank room traverse etc.)

+ Maximum wall thickness

Assembly instructions:
see page K 3/2



Design features

- with internal thread ISO 228
- with intermediate shut-off
- Suitable protection pipe PVC 110x5,3 (not included in scope of supply!)

Order No.	PE pipe Ø d	IT R" ISO 228	L	L1	H	H1	Weight
6909	32	1"	220		123	68,5	3,0
	50	1½"	223	177	124	70,0	3,7
	63	2"	223		134	80,0	3,5

Hawle wall inlet fitting

Protection pipe

No. 6909

Made of ductile iron

