

Drilling machine

Changeable carbide drill (WHM)



Design features

- Dimensiones:
1" — Ø 24
1¼" — Ø 29
1½" — Ø 35
2" — Ø 40

Design features

- Continuous feed and motorised power are necessary!
- Easy and cost saving replacement of worm cutting tips without any technical efforts
- **One** cutting tip holder for each **two** dimensions of cutting tips
- Available as set for one dimension each and in single components for an individual demand

Order No.	Description	Dimensions
5855W	WHM-drill complete	1" — Ø 24
		1¼" — Ø 29
		1½" — Ø 35
		2" — Ø 40
5856	WHM-cutting tip holder including set bolt	1" — 1¼"
		1½" — 2"
5857	WHM-cutting tip	1" — Ø 24
		1¼" — Ø 29
		1½" — Ø 35
		2" — Ø 40
NN52	Torx-set bolt for WHM-cutting tip holder	GWS 25 1" — 1¼"
		GWS 32 1½" — 2"
5911	Torx-pin key	

Cup drill for steel and ductile iron pipes No. 5870



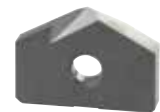
WHM-drill for cast iron, cement lined cast iron and AC pipes No. 5855W



WHM-cutting tip holder No. 5856



WHM-cutting tip No. 5857



Set bolt No. NN52



Torx-pin key No. 5911

