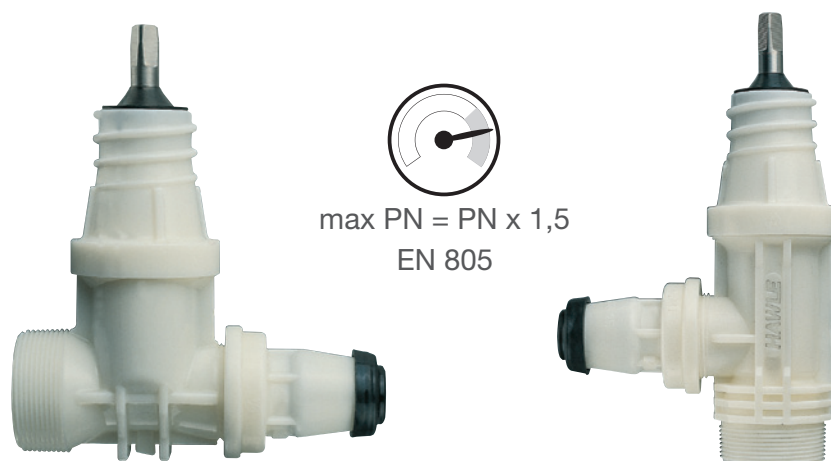


# INSTALLATION **INSTRUCTIONS**

for Hawle ISO Combination Service Valves with already mounted ISO push-fit fitting No. 2680 (horizontal connection) and No. 3150 (vertical connection)

- 1. Intended use:** ISO Combination Service Valves are used in the potable water supply network to assure a shut-off facility in the house connection pipeline.
- 2. Product description:** The ISO Combination Service Valve is ready for installation and has an already mounted ISO push-fit fitting for restraint assembly with a house connection PE-pipe according to EN 12201-2 and DIN 8074 in the different dimensions od 25 – 63 mm, up to PN 16 bar.



### 3. Assembly:

- The installation may only be carried out by trained personnel according to the rules of the trade. For installation the applicable standards and regulations as well as the provisions for the prevention of accidents shall be complied with.
- Assemble the pipe saddle on the cleaned pipe with the threaded outlet in horizontal direction. The external thread is mounted in the internal thread of the fixed pipe saddle by using a sealing tape.
- Push the chamfered and lubricated PE pipe into the ISO-fitting socket.
- Make sure that the threaded connection between the ISO-Combi Service Valve and the ISO Fitting is not untightened. In case of movement of this threaded connection make sure that the fitting is tightened again with 45 Nm torque.
- Carry out a pressure test before backfilling of the trench according to EN 805.

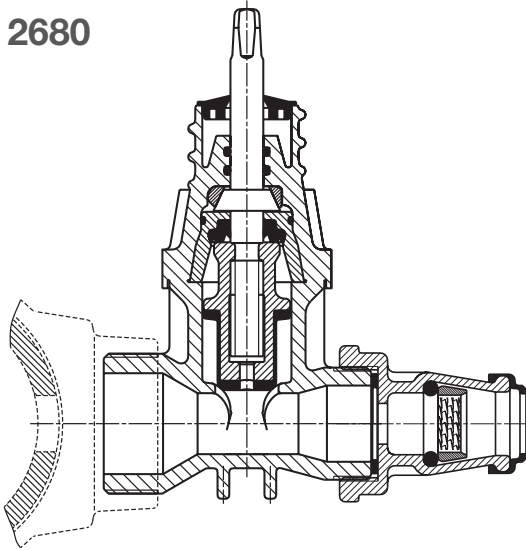


# ISO COMBINATION TAPPING VALVE

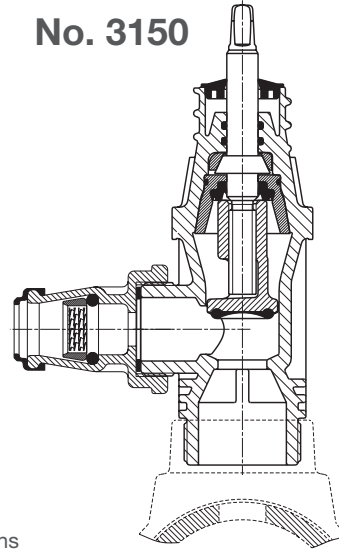
Made of POM

With 2" external thread EN 10226-1 for mounting onto saddle and ISO push-fit fitting

No. 2680



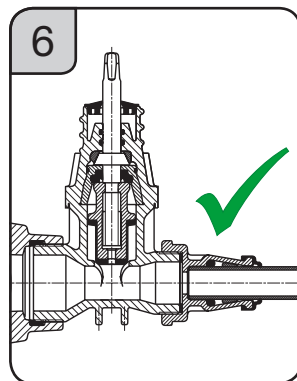
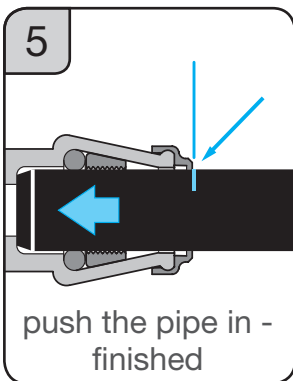
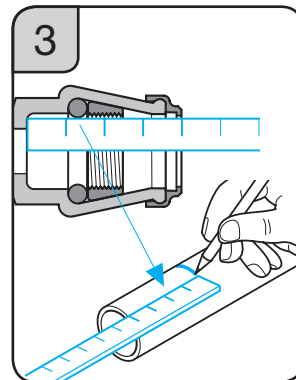
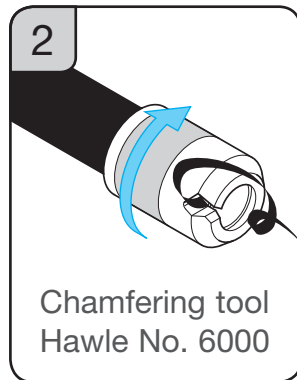
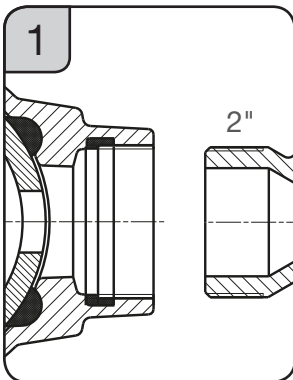
No. 3150



Symbol Illustrations

## ASSEMBLY INSTRUCTIONS

1. Mounting onto the saddle: Screws the 2" external thread into the internal thread of the saddle



Edition 03.2018 Art.-No.: 5017100 Printed on recycled, chlorine-free bleached paper and aging. PEFC