

2022

Knife gate valve



made for generations.

Knife Gate Valve

with non-rising spindle

No. 3600

with non-rising spindle

No. 3600EL

with flange connection for electric actuator

- Tight on both sides
- Gate valve for various applications
- Strong gate valve construction ensuring high resistance to corrosion
- Operation by handwheel or optional electric drive – be sure to specify when ordering
- One-piece body for DN50 - DN200, above DN200 a two-piece body
- Face to face according to EN 558 GR 20
- Maximum operating pressure 10 bar or 6 bar (see table)

Standard version:

with non-rising spindle

Variants of execution:

- with a connection for an electric drive (cat. No. 3600EL)
- with connection to a pneumatic drive (catalog no. 3600PN)
- with a pneumatic drive (catalog no. 3600PM)



DN50 - DN200

DN250 - DN400

MATERIALS:

Body: grey cast iron, conforming to EN 1561, epoxy powder coated

Bearing: DN50 - DN200: ductile cast iron, DN250 - DN400: grey cast iron

Knife plate: Stainless steel

Spindle and columns: Stainless steel

Hexagonal bolts: Stainless steel

Spindle nut: Bronze

Seals: elastomer

Slip washer: POM

Suitable accessories:

Electromechanical drive	No. 9920
Handwheel	No. 7800
Pneumatic drive	No. 9925

No.	Version	MOP PN	Dimensions / DN												
			50	65	80	100	125	150	200	250	300	350	400		
3600	with non-rising spindle	10	■	■	■	■	■	■	■	■	■	■	■	■	■
		6*	■	■	■	■	■	■	■	■	■	■	■	■	■
3600EL	with a connection for an electric drive	10	■	■	■	■	■	■	■	■	■	■	■	■	■
		6*	■	■	■	■	■	■	■	■	■	■	■	■	■
3600PN	with connection to a pneumatic drive	10	■	■	■	■	■	■	■	■	■	■	■	■	■
		6*	■	■	■	■	■	■	■	■	■	■	■	■	■
3600PM	with a pneumatic drive	10	■	■	■	■	■	■	■	■	■	■	■	■	■
		6*	■	■	■	■	■	■	■	■	■	■	■	■	■

* drilling is according to EN 1092-2 PN10 / maximum operation pressure PN6

Knife Gate Valve

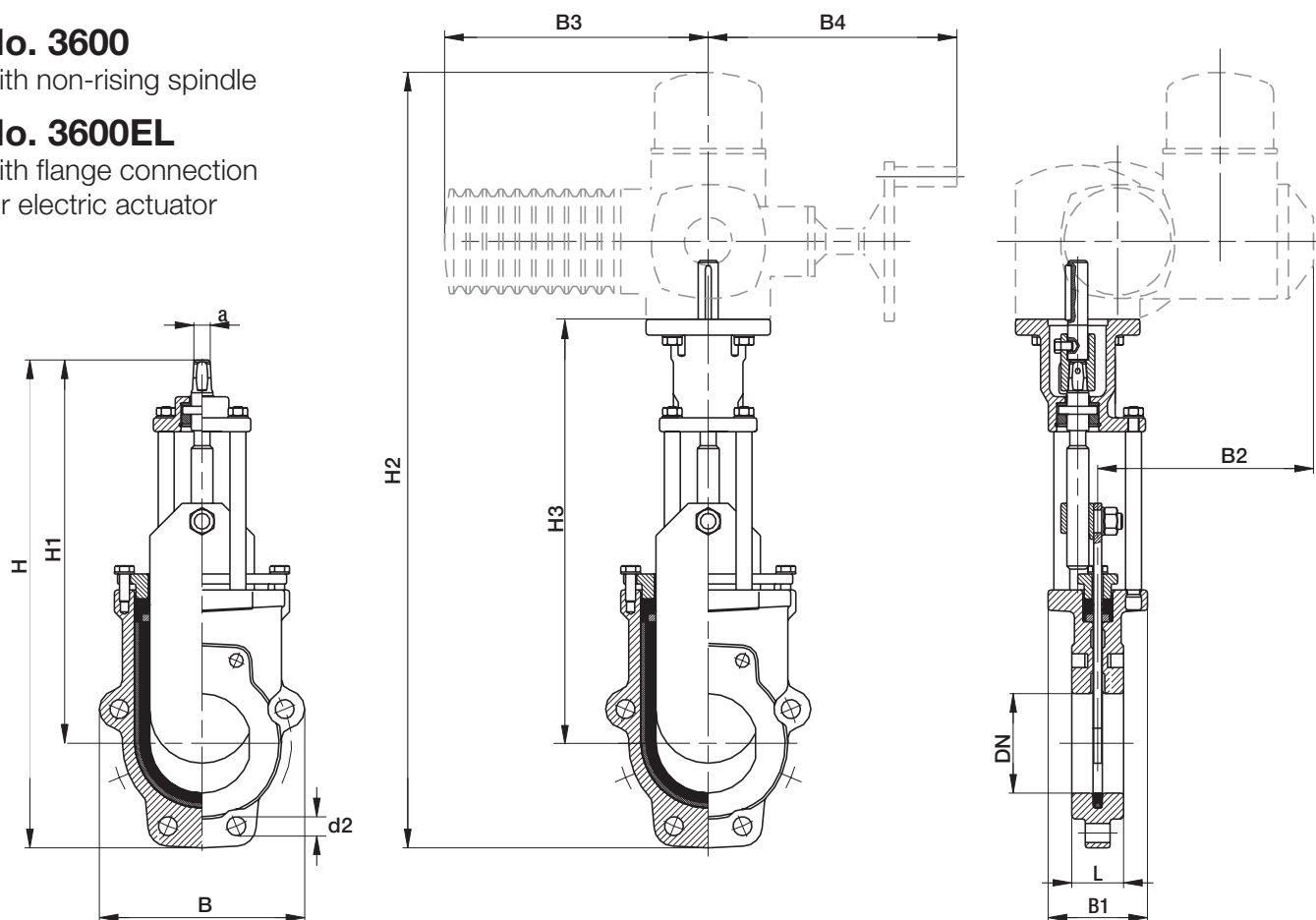
with non-rising spindle

No. 3600

with non-rising spindle

No. 3600EL

with flange connection
for electric actuator



DN	50	65	80	100	125	150	200	250*	300*	350*	400*
MOP (PN)	10	10	10	10	10	10	10	6	6	6	6
Thread	M16	M16	M16	M16	M16	M20	M20	M20	M20	M20	M24
Through bores holes	2	2	6	6	6	6	6	8	8	10	10
Blind tapped holes Quantity/Side	2	2	2	2	2	2	2	4	4	6	6
Blind tapped holes Depth t	9,5	11	10	13	14	14	14	14	19	19	26
k	125	145	160	180	210	240	295	350	400	460	515
d2	19	19	19	19	19	23	23	23	23	23	28
H	349	381	450	490	559	619	753	957	1081	1242	1353
H1	284	309	355	385	439	483	591	788	888	1016	1103
H2	695	727	779	819	892	952	1088	1296	1420	1610	1721
H3	341	373	396	426	484	528	636	837	937	1068	1155
B	125	1139	188	206	234	268	319	347	399	462	512
B1	88	88	100	100	100	100	127	160	160	180	180
B2	273	273	273	273	273	273	287	279	279	318	318
B3	265	265	265	265	265	265	282	282	282	385	385
B4	250	250	250	250	250	250	256	256	256	325	325
L	43	46	46	52	56	56	60	68	78	78	102
Spindle square a	10,3	10,3	14,8 (19,3**)	14,8 (19,3**)	19,3	19,3	19,3	24,3	24,3	27,3	27,3
Open / Close revolutions	13	17	8	10	13	15	20	21	25	29	34
Weight No. 3600	6,3	7,0	11,0	14,0	14,0	22,0	33,0	73,0	99,0	140,0	180,0
Weight No. 3600EL	6,5	9,0	13,0	16,0	19,5	24,5	36,0	76,0	102,0	144,0	184,0
Suitable handwheel*** No.7800DN	2"	2"	100	100	125-150	125-150	125-150	200	200	250-350	250-350

* Range drilling PN10 / operating pressure PN6

** with spindle adapter

*** not included in scope of delivery

Knife Gate Valve

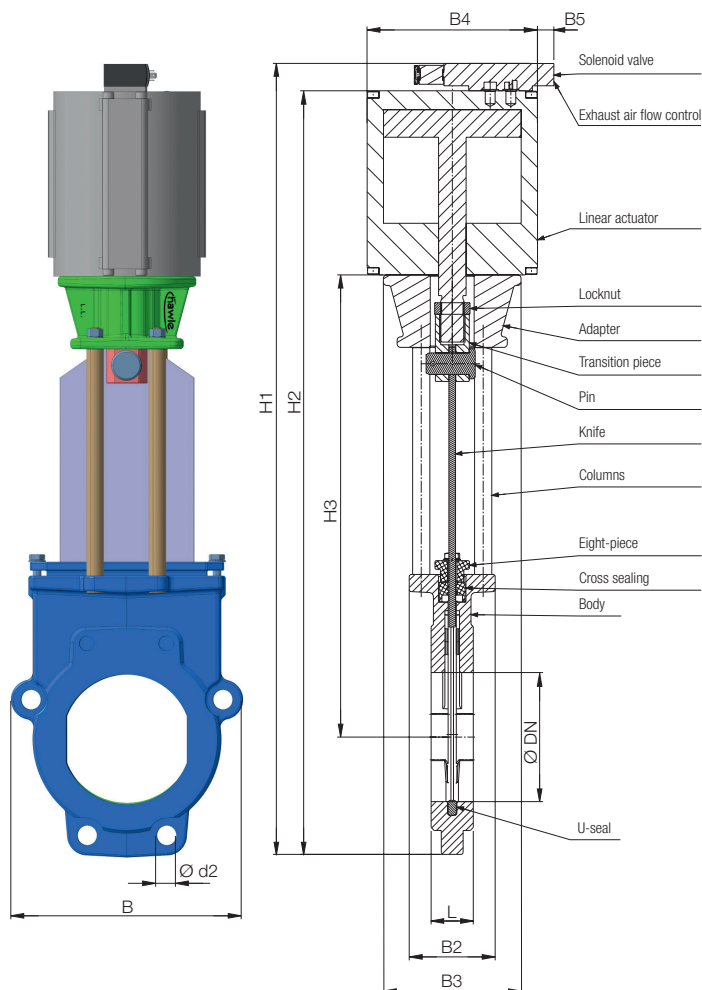
with non-rising spindle

No. 3600PN

with flange connection for pneumatic actuator

No. 3600PM

with the pneumatic actuator



Parts	Material
Body	Grey cast iron, Ductile iron
Cross sealing	Elastomer
U-sealing	Elastomer
Eight-piece	Grey cast iron
Columns	Stainless steel
Knife	Stainless steel
Transition piece	Stainless steel
Pin	Stainless steel
Linear actuator	Festo
Adapter	Ductile iron
Locknut	Stainless steel
Bolts	Stainless steel
Solenoid valve	Festo
Exhaust air flow control	Festo

DN	Pneumatic driver	Recommended closing time ** (sec)	Adapter	Connector	Transition element
DN50	DLP(DFPC*)-80-50-A	3	Type A1	Type A	Type A1
DN65	DLP(DFPC*)-80-65-A	3	Type A1	Type A	Type A1
DN80	DLP(DFPC*)-100-80-A	5	Type A2	Type B	Type A2
DN100	DLP(DFPC*)-100-100-A	5	Type A2	Type B	Type A2
DN125	DLP(DFPC*)-160-150-A	5	Type B1	Type C	Type B1
DN150	DLP(DFPC*)-160-200-A	6	Type B1		Type B2
DN200	DLP(DFPC*)-160-200-A	6	Type B2	Type D	Type B2
DN250	DLP(DFPC*)-160-200-A	11	Type C1		Type C1
DN300	DLP(DFPC*)-160-200-A	15	Type C1		Type C1
DN350	DLP(DFPC*)-160-200-A	18	Type C2		Type C2
DN400	DLP(DFPC*)-160-200-A	26	Type C2	Type C2	

* on request

** with exhaust air valve control

	DN50	DN65	DN80	DN100	DN125	DN150	DN200	DN250	DN300	DN350	DN400
B	125	139	188	206	234	268	319	347	399	462	512
B2	88	88	100	100	100	100	127	160	160	180	180
B3	129	129	129	129	160	160	160	244	244	244	244
B4/B4*	108/94	108/94	131/108	131/108	199/170	199/170	199/170	271/211	271/211	308	308
B5/B5*	19/58	19/58	19/58	19/58	19/58	19/58	19/58	0/58	0/58	0/58	0/58
L	43	46	46	52	56	56	60	68	78	78	102
H1/H1*	523/508	570/545	649/622	708/681	832/819	908/895	996/983	1397/1391	1601/1595	1775/**	1933/**
H2/H2*	491/476	538/513	617/590	676/649	800/787	876/863	964/951	1365/1359	1569/1563	1745/**	1903/**
H3	286	311	347	377	442	486	489	796	896	1019	1106
Ød2	19	19	19	19	19	23	23	23	23	23	28

* dimensions for pneumatic drive DFPC (matching with DFPC drive on request)

** size on request

The optimal air pressure values for the operation of gate valves with actuators are 5.5 - 7.0 bar.

Average air flow for valves in the range of 950l/min. - 1350l/min.

Knife Gate Valve

with non-rising spindle

No. 3600PN

with flange connection for pneumatic actuator

No. 3600PM

with the pneumatic actuator

Recommended solenoid valves according to the possibility of connection to air supply.

Types of valves depending on the application

- Standard Namur solenoid valves VSNC, mounted directly on the actuator
- VUVS series universal solenoid valve assembled individually
- Manually actuated valves VHEF
- Valve terminal with multi-pin or fieldbus connection

Basic types of solenoid valves:

- located on the actuator
- located outside the drive
- integrated

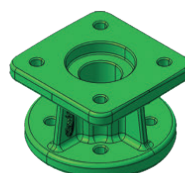
Functions of solenoid valves:

- 5/2 monostable (single solenoid valve, spring return)
- 5/2 bistable (double solenoid valve)
- 5/3 mid-position pressurised

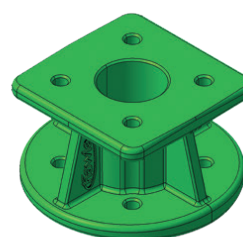
Additional equipment:

- Direct mount actuator sensors
- (SMT, CRSMT) - signaling of end positions or intermediate drives
- DADG adapter for mounting a Namur VSNC valve or position sensor directly on the DFPC actuators

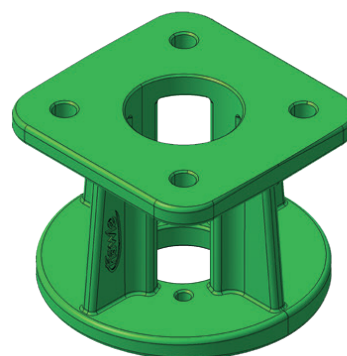
Other accessories on request



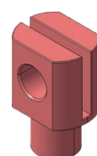
A1 + A2



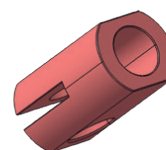
B1 + B2



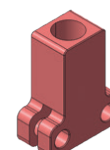
C1 + C2



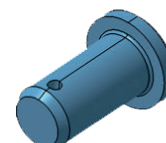
**Type
A1+ A2**



**Type
B1+ B2**



**Type
C1 + C2**



**Type
A+ B+ C**

If you wish to use a knife gate valve with pneumatic drive from another manufacturer, please contact the Hawle Technical Department.



E. Hawle Armaturenwerke GmbH

Wagrainer Straße 13 | 4840 Vöcklabruck | Austria

☎ +43 7672 72 576-0 📠 +43 7672 78 464 ✉ hawle@hawle.at
hawle.com



Printed on recycled, chlorine-free bleached paper and aging.

Art.-Nr.: HAW-402-EN